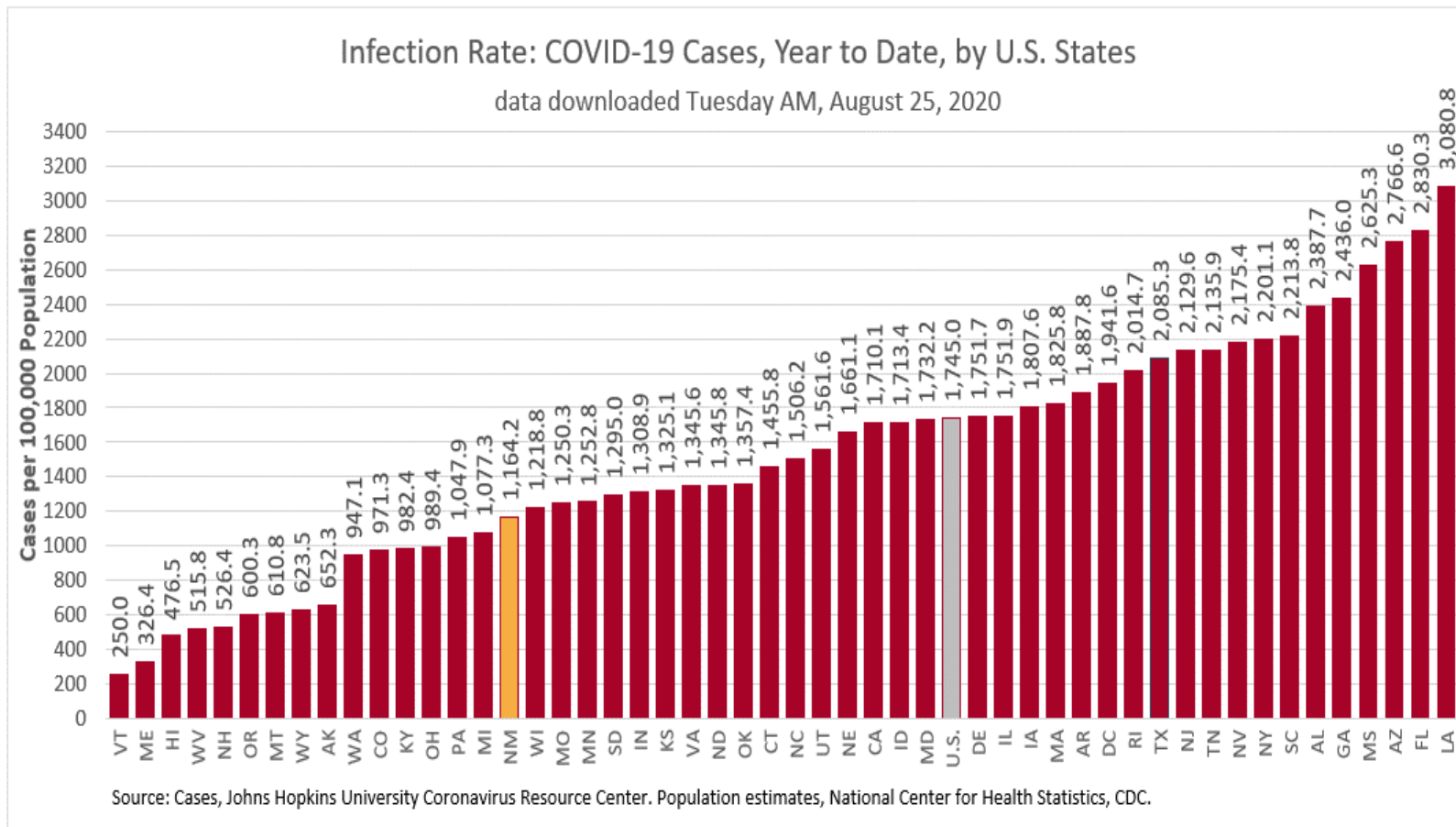


COVID-19 in New Mexico: Epidemiologic and Modeling Update

August 25, 2020

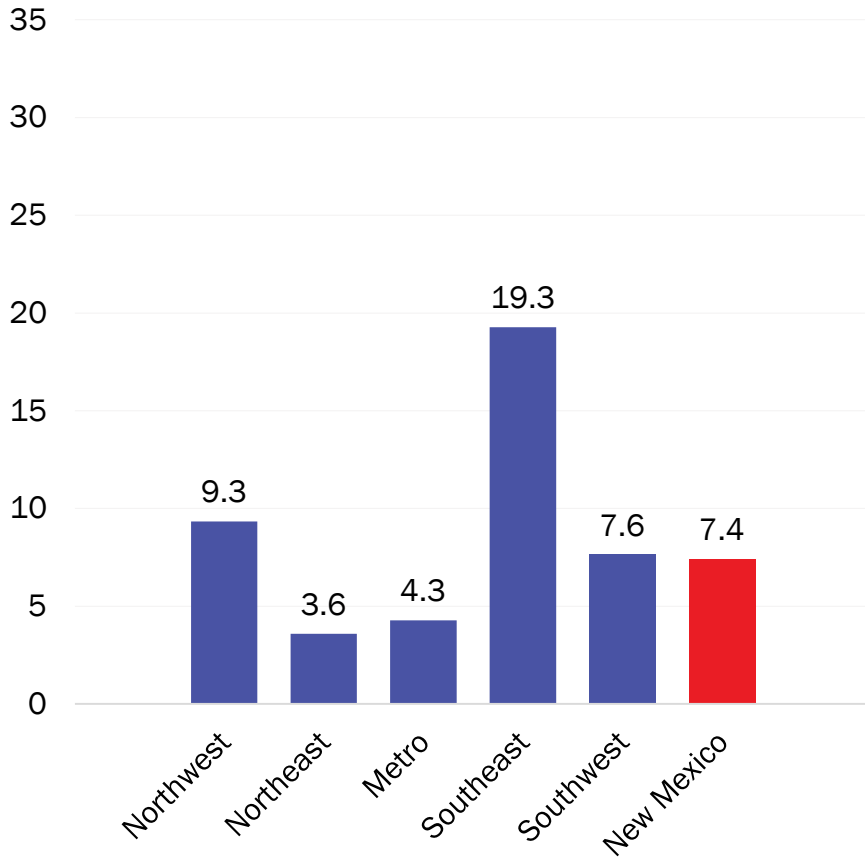
New Mexico has the 36th highest number of cases per 100,000 population in the United States



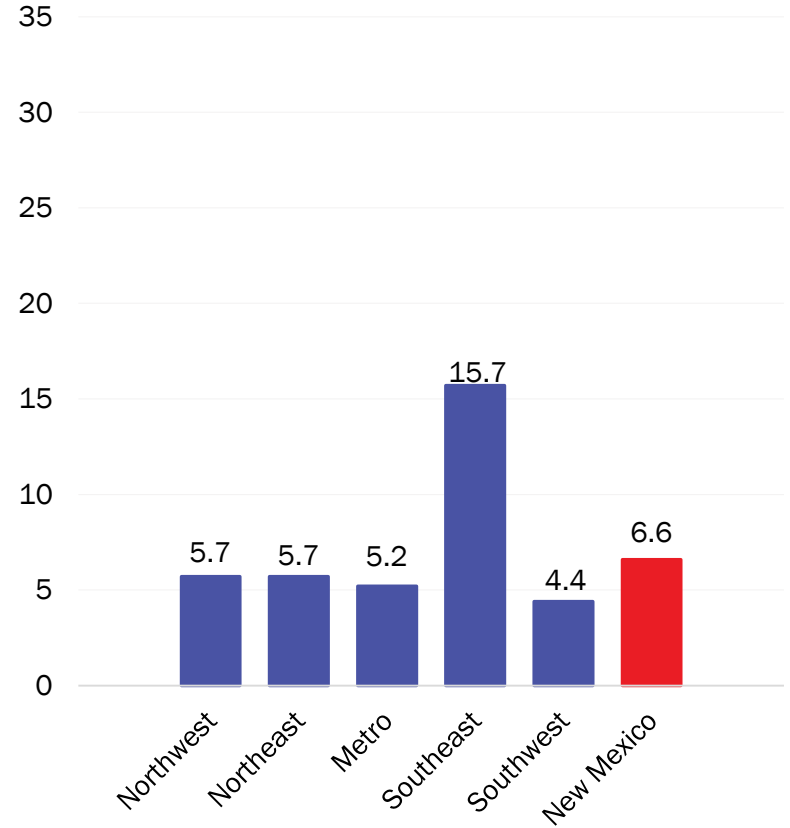
COVID-19 prevalence per 100,000 population

*Excludes cases among inmates in state and federal corrections and detention centers

New cases (Last 7 days) – August 16



New cases (Last 7 days) – August 23

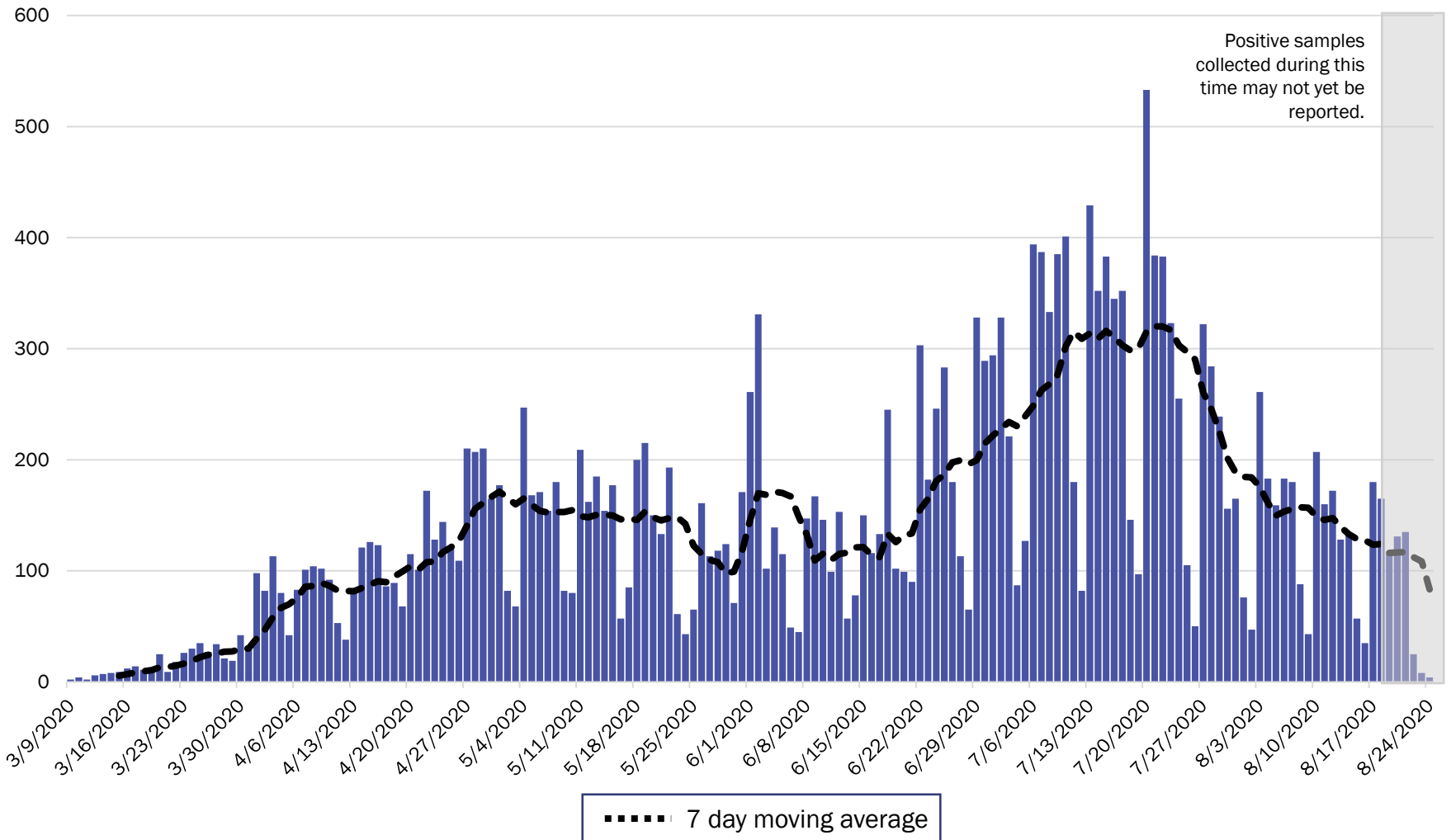


Source: Infectious Disease Epidemiology Bureau, Epidemiology and Response Division 8.23.2020, New Mexico Department of Health. Population estimates, UNM Geospatial and Population Studies Program.



Investing for tomorrow, delivering today.

New Mexico COVID-19 Cases by Date of Specimen Collection – August 24, 2020



Source: Infectious Disease Epidemiology Bureau, Epidemiology and Response Division 8.24.2020, New Mexico Department of Health.

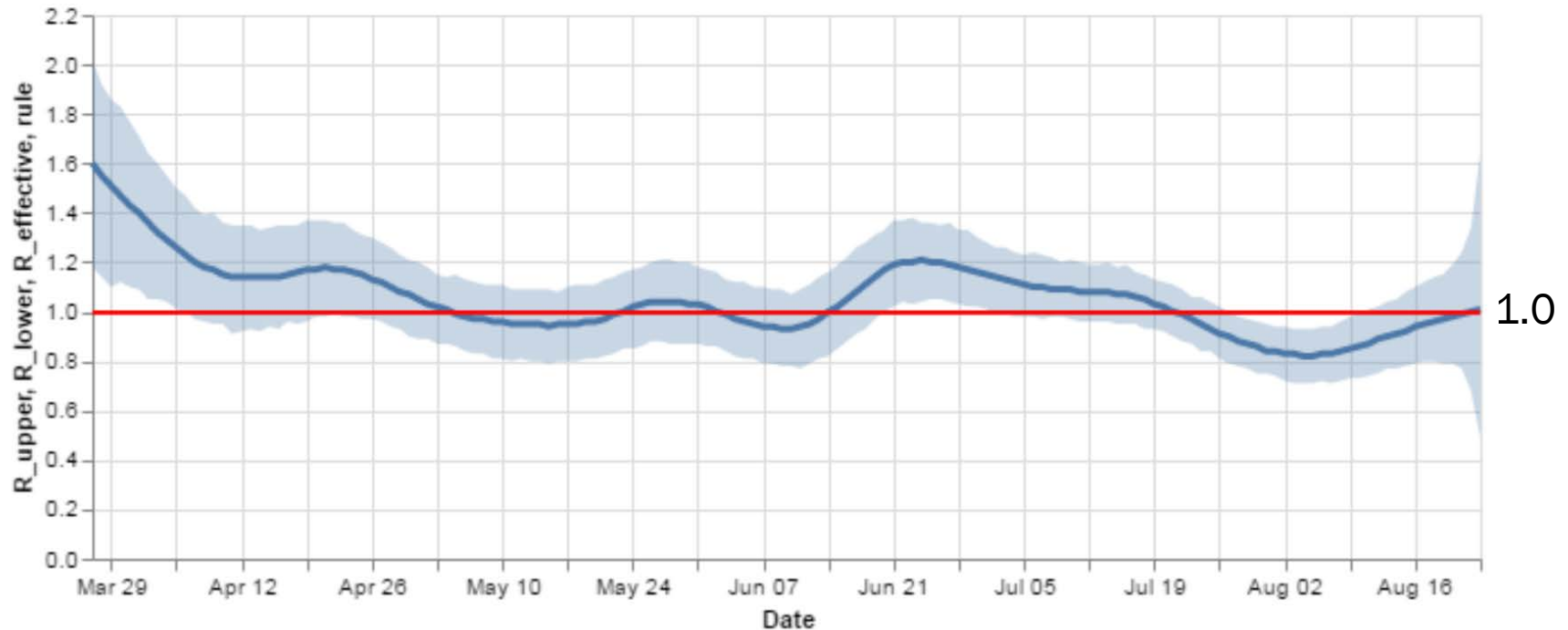


Investing for tomorrow, delivering today.



Statewide R-effective has increased to 1.0

R_effective over time, STATE



Courtesy of Presbyterian Healthcare Services – August 24, 2020.

Key

- Low Level Endemic <1.0
- Approaching Low Level Endemic 1.0-1.05
- Requiring further mitigation >1.05

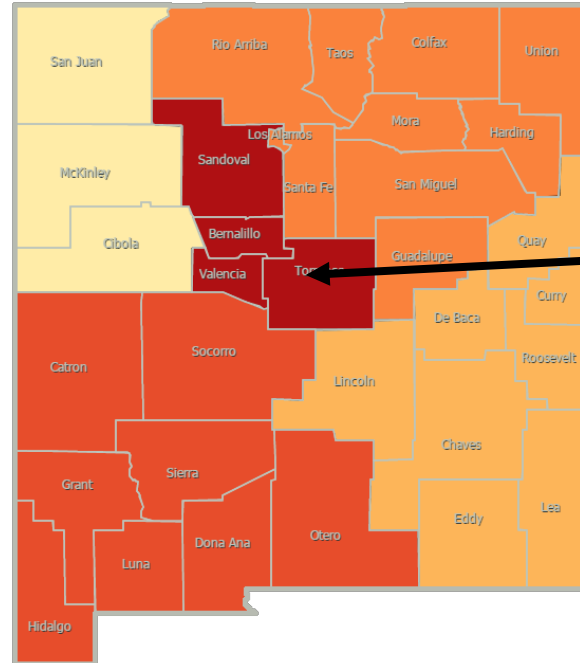
Northwest
R_effective 1.1 ↑

Northeast
R_effective 1.3 ↑

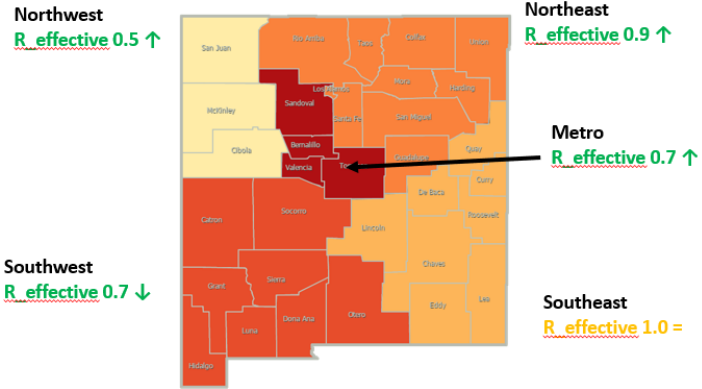
Metro
R_effective 1.2 ↑

Southwest
R_effective 0.6 ↓

Southeast
R_effective 0.9 ↓



As of August 17, 2020



Region	R-effective	95% Confidence Interval
State	1.0	[0.5, 1.6]
Metro	1.2	[0.2, 2.3]
Northeast	1.3	[0.0, 3.2]
Northwest	1.1	[0.0, 3.0]
Southeast	0.9	[0.0, 1.8]
Southwest	0.6	[0.0, 2.5]

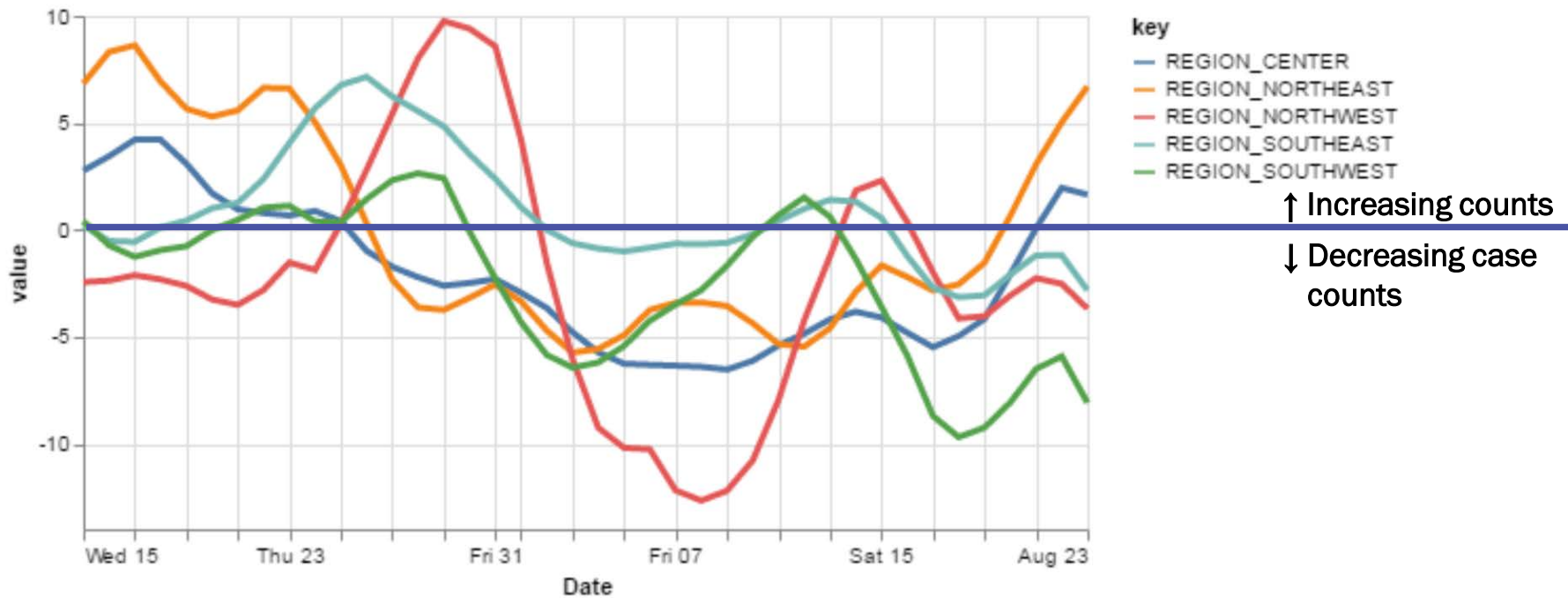
Courtesy of Presbyterian Healthcare Services – August 23, 2020.



Investing for tomorrow, delivering today.

Growth rates in the Metro and NE regions are increasing, while other regions are decreasing.

14-day relative growth rate (%), Regions



↑ Increasing counts
↓ Decreasing case counts

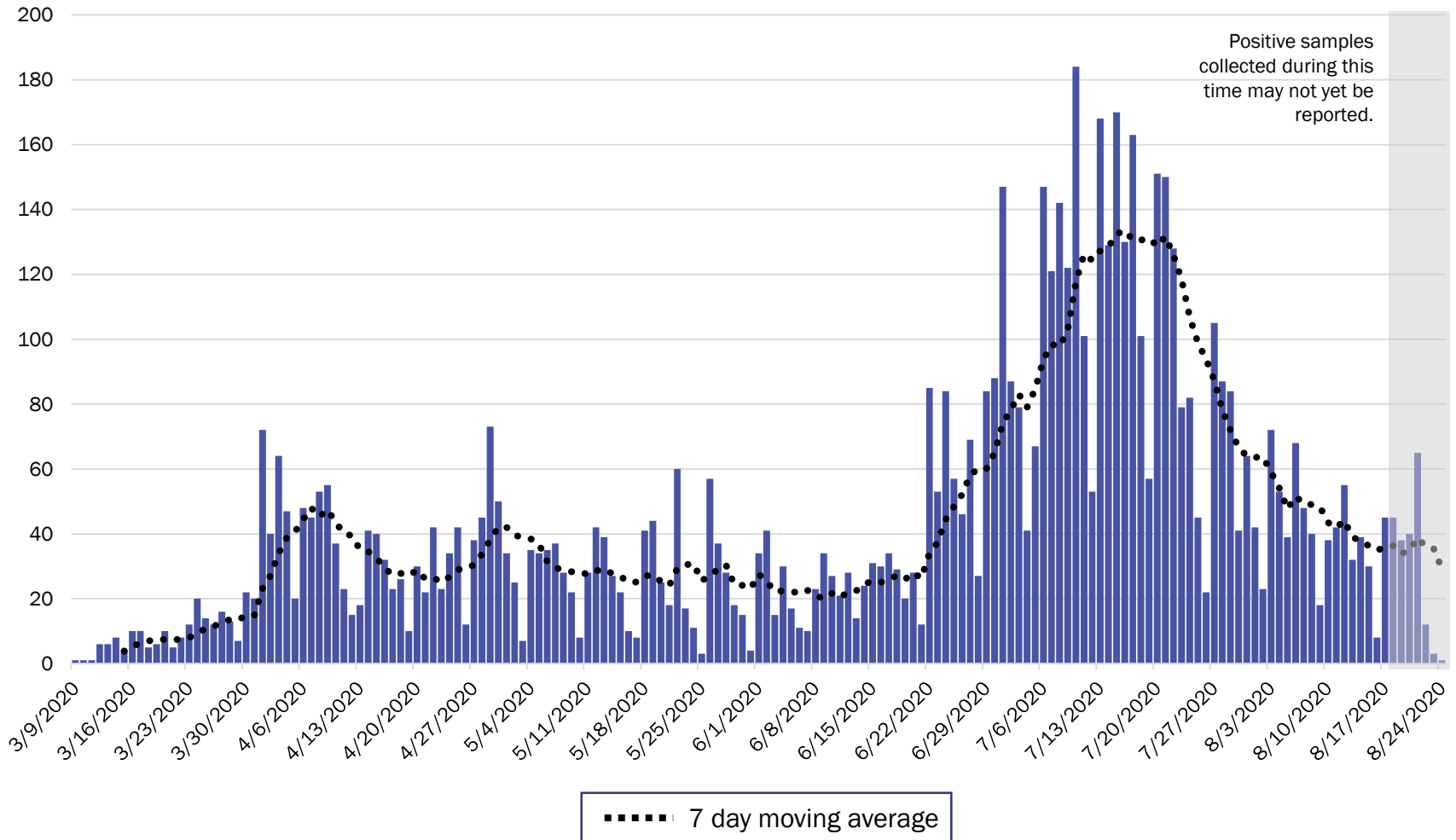
Courtesy of Presbyterian Healthcare Services – August 24, 2020.



Investing for tomorrow, delivering today.

1190 S. St. Francis Drive • Santa Fe, NM 87505 • Phone: 505-827-2613 • Fax: 505-827-2530 • nmhealth.org

Metro Region Case Count by Collection Date with 7 Day Moving Average – August 24, 2020



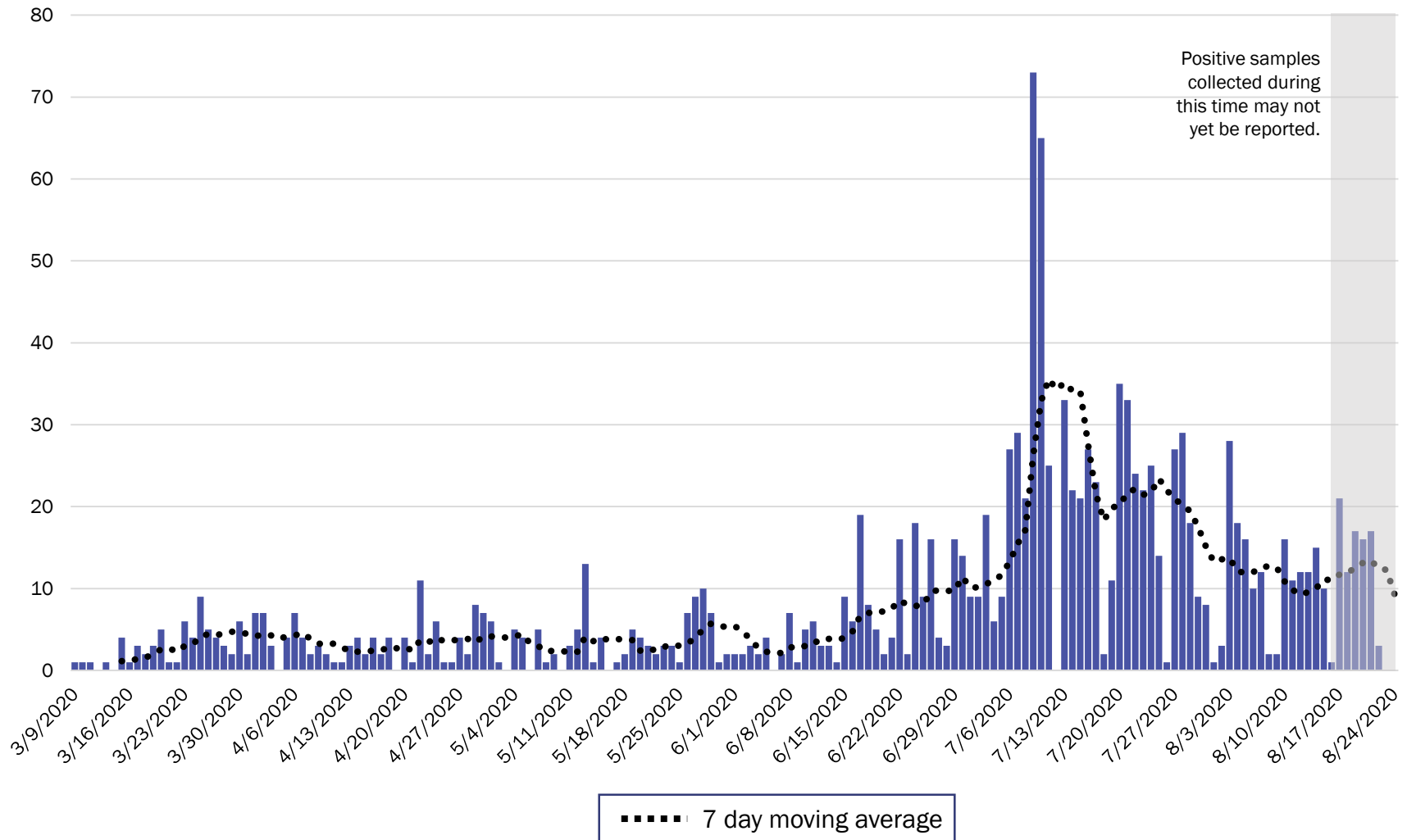
Source: Infectious Disease Epidemiology Bureau, Epidemiology and Response Division 8.24.2020, New Mexico Department of Health.



Investing for tomorrow, delivering today.

1190 S. St. Francis Drive • Santa Fe, NM 87505 • Phone: 505-827-2613 • Fax: 505-827-2530 • nmhealth.org

Northeast Region Case Count by Collection Date with 7 Day Moving Average – August 24, 2020

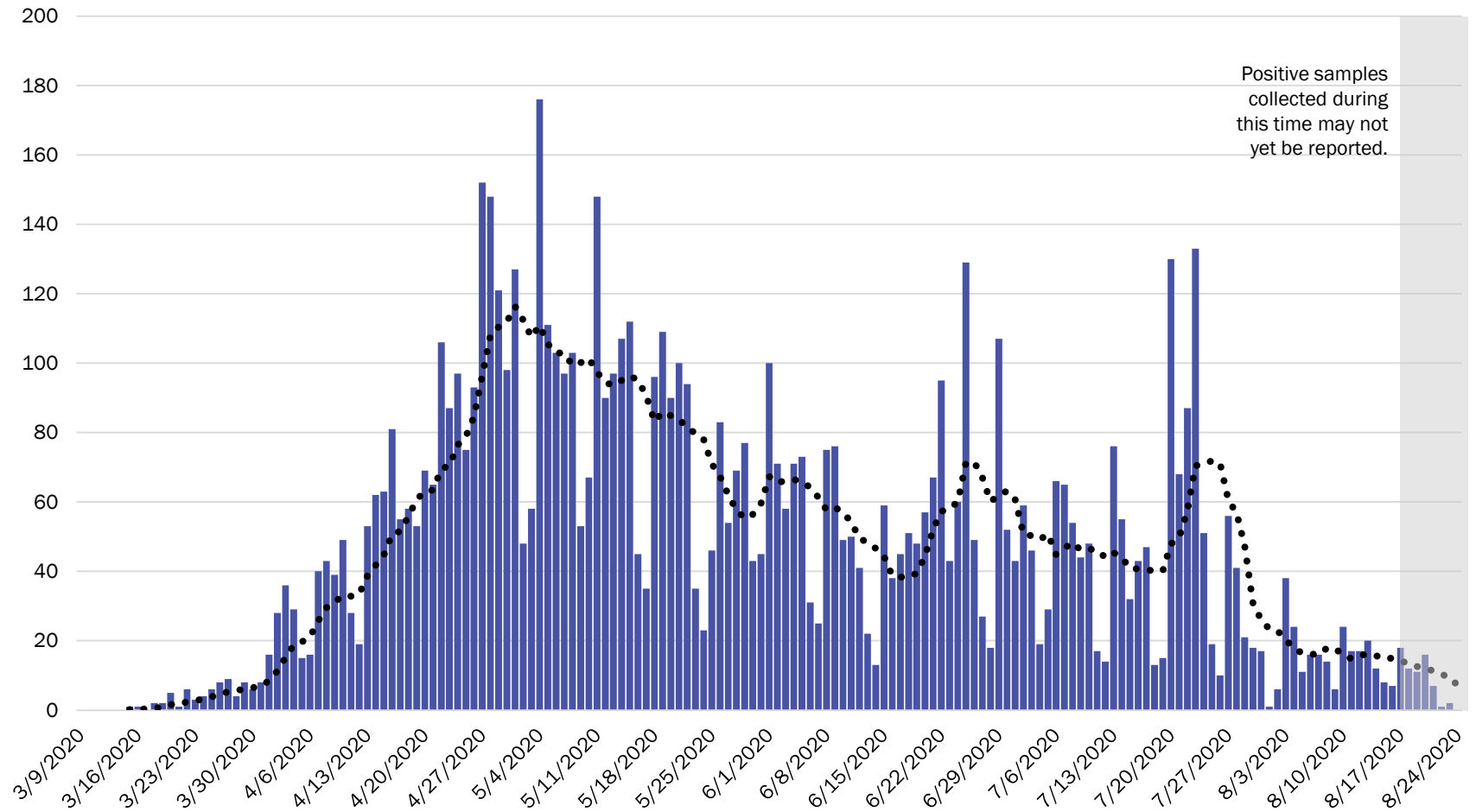


Source: Infectious Disease Epidemiology Bureau, Epidemiology and Response Division 8.24.2020, New Mexico Department of Health.



Investing for tomorrow, delivering today.

Northwest Region Case Count by Collection Date with 7 Day Moving Average – August 24, 2020



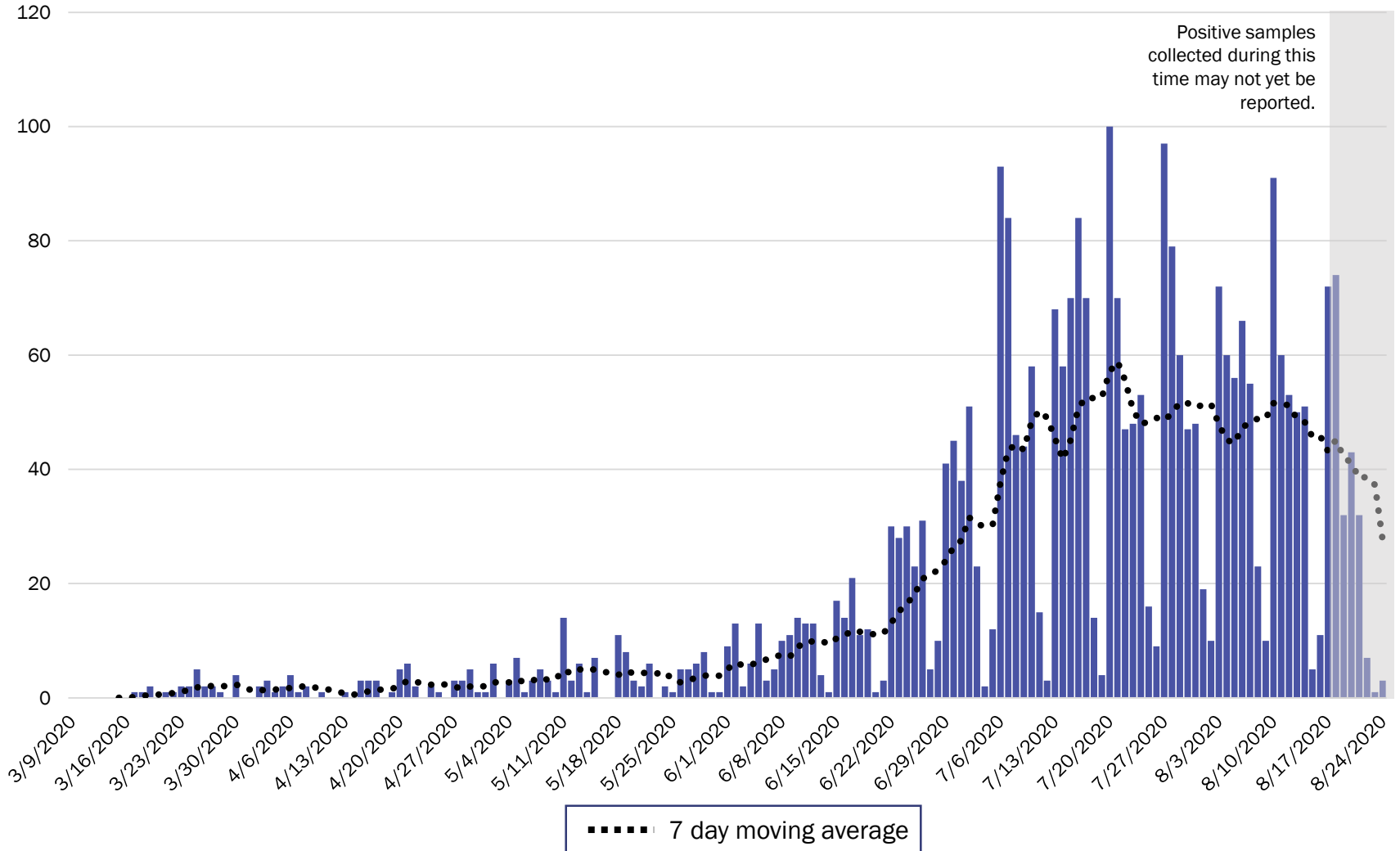
Source: Infectious Disease Epidemiology Bureau, Epidemiology and Response Division 8.24.2020, New Mexico Department of Health.



Investing for tomorrow, delivering today.

1190 S. St. Francis Drive • Santa Fe, NM 87505 • Phone: 505-827-2613 • Fax: 505-827-2530 • nmhealth.org

Southeast Region Case Count by Collection Date with 7 Day Moving Average – August 24, 2020



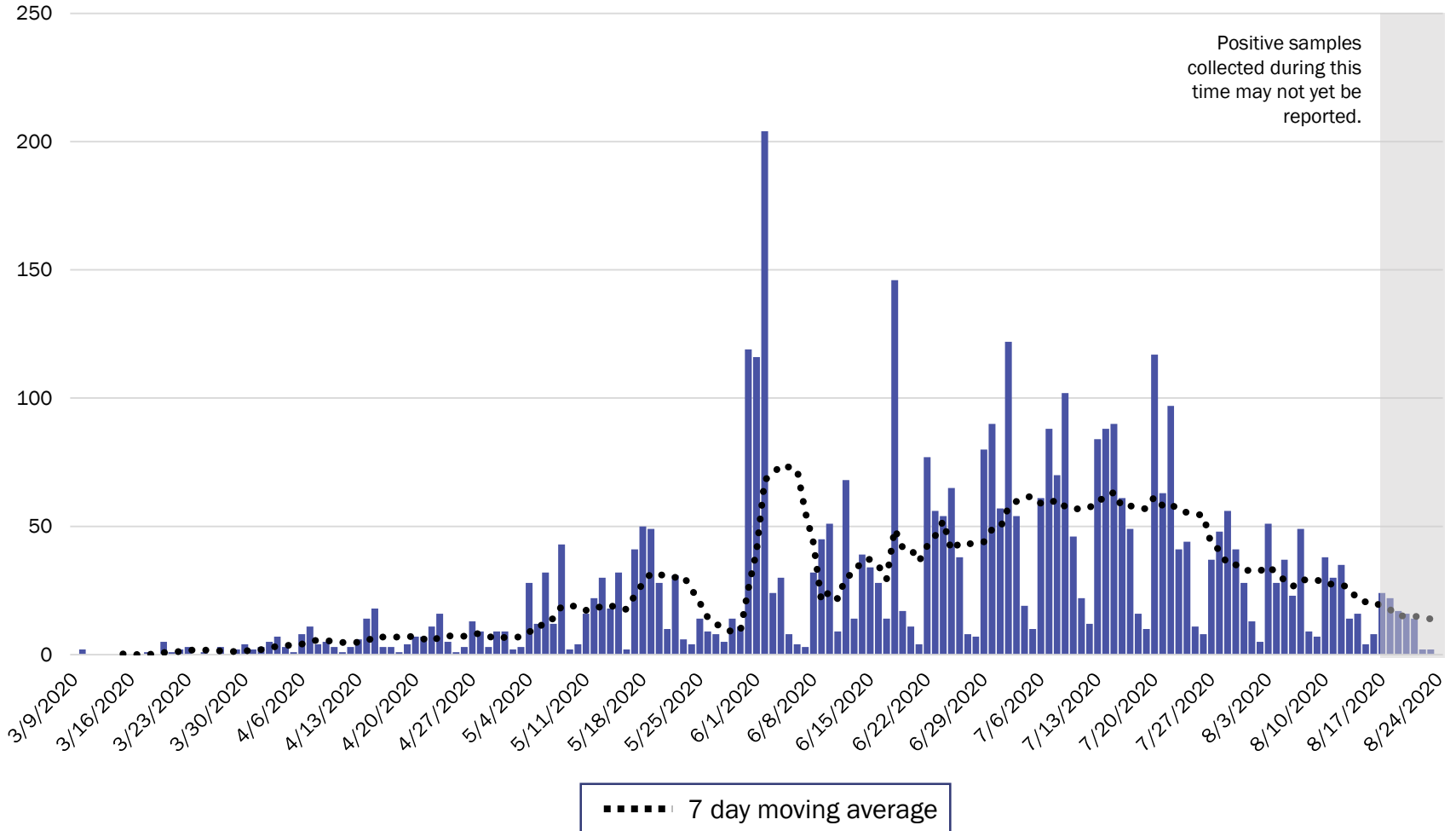
Source: Infectious Disease Epidemiology Bureau, Epidemiology and Response Division 8.24.2020, New Mexico Department of Health.



Investing for tomorrow, delivering today.

1190 S. St. Francis Drive • Santa Fe, NM 87505 • Phone: 505-827-2613 • Fax: 505-827-2530 • nmhealth.org

Southwest Region Case Count by Collection Date with 7 Day Moving Average – August 24, 2020



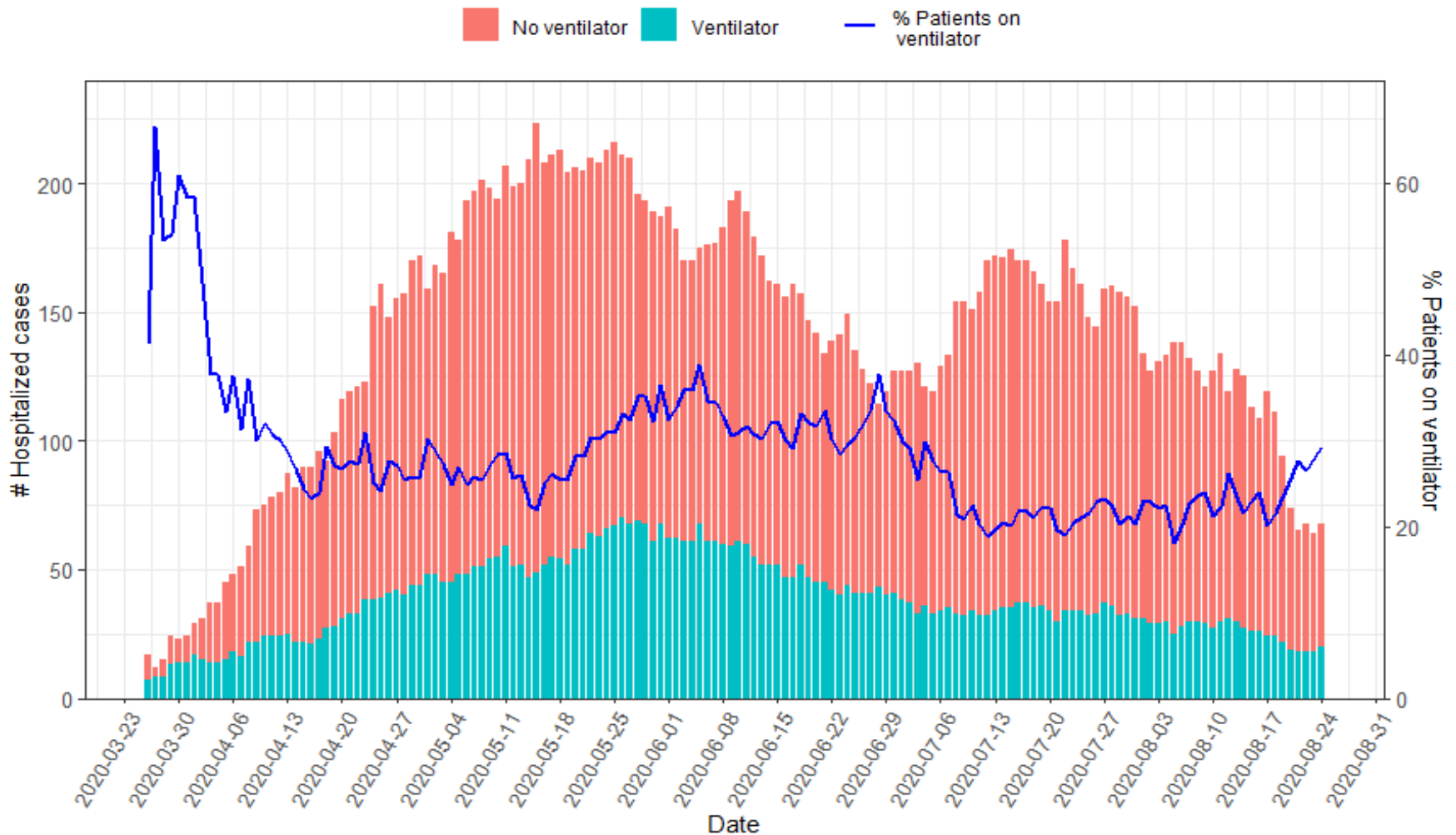
Source: Infectious Disease Epidemiology Bureau, Epidemiology and Response Division 8.24.2020, New Mexico Department of Health.



Investing for tomorrow, delivering today.

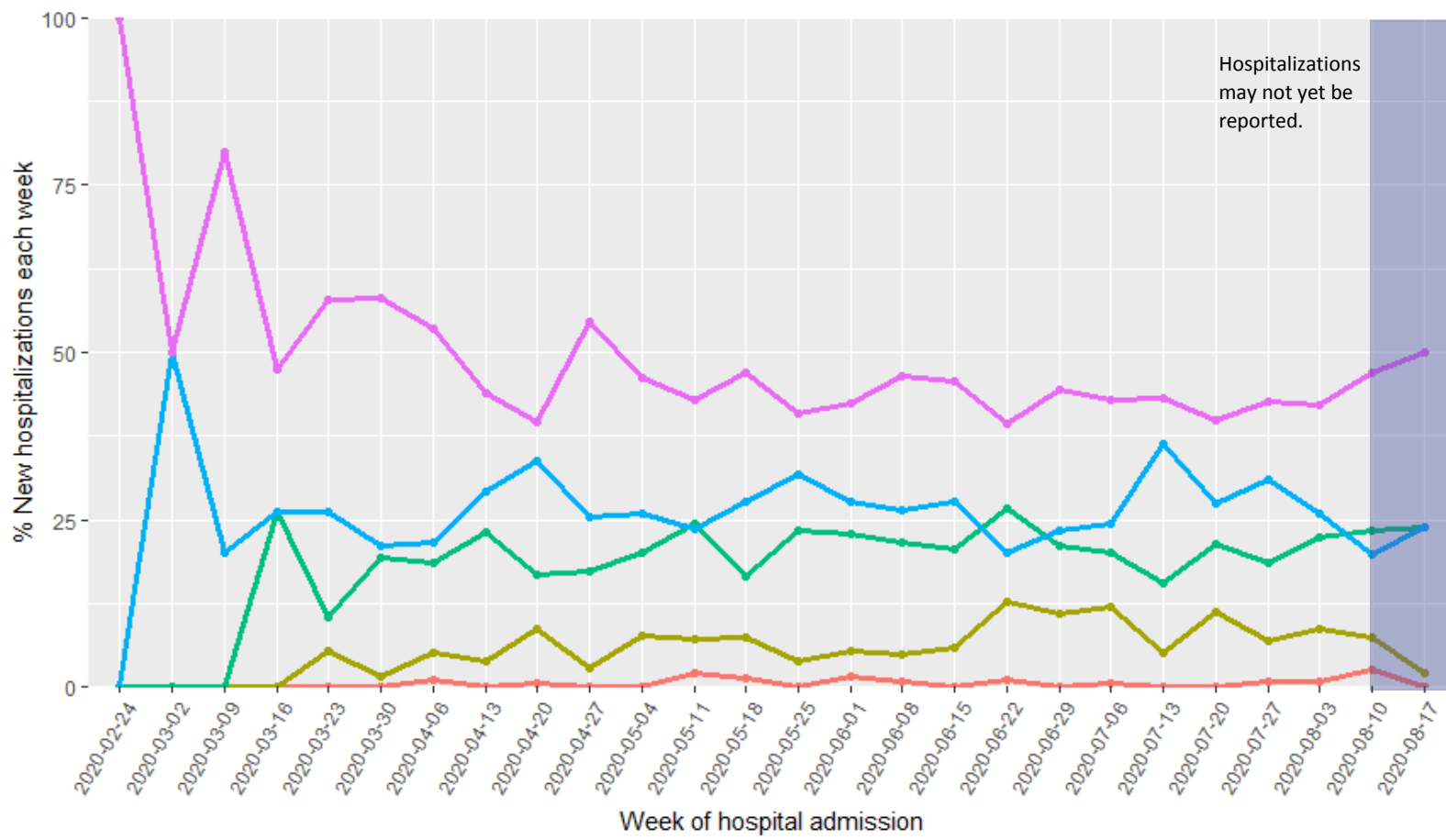
1190 S. St. Francis Drive • Santa Fe, NM 87505 • Phone: 505-827-2613 • Fax: 505-827-2530 • nmhealth.org

Hospitalizations continue to decline.



As of August 24, 2020

Patients who are 60+ years old continue to make up the largest percentage of admissions each week. The 30-44 and 45-59 year old age groups each represented ~25% of admissions last week.



Hospitalizations may not yet be reported.

Age group 0-14 15-29 30-44 45-59 60+

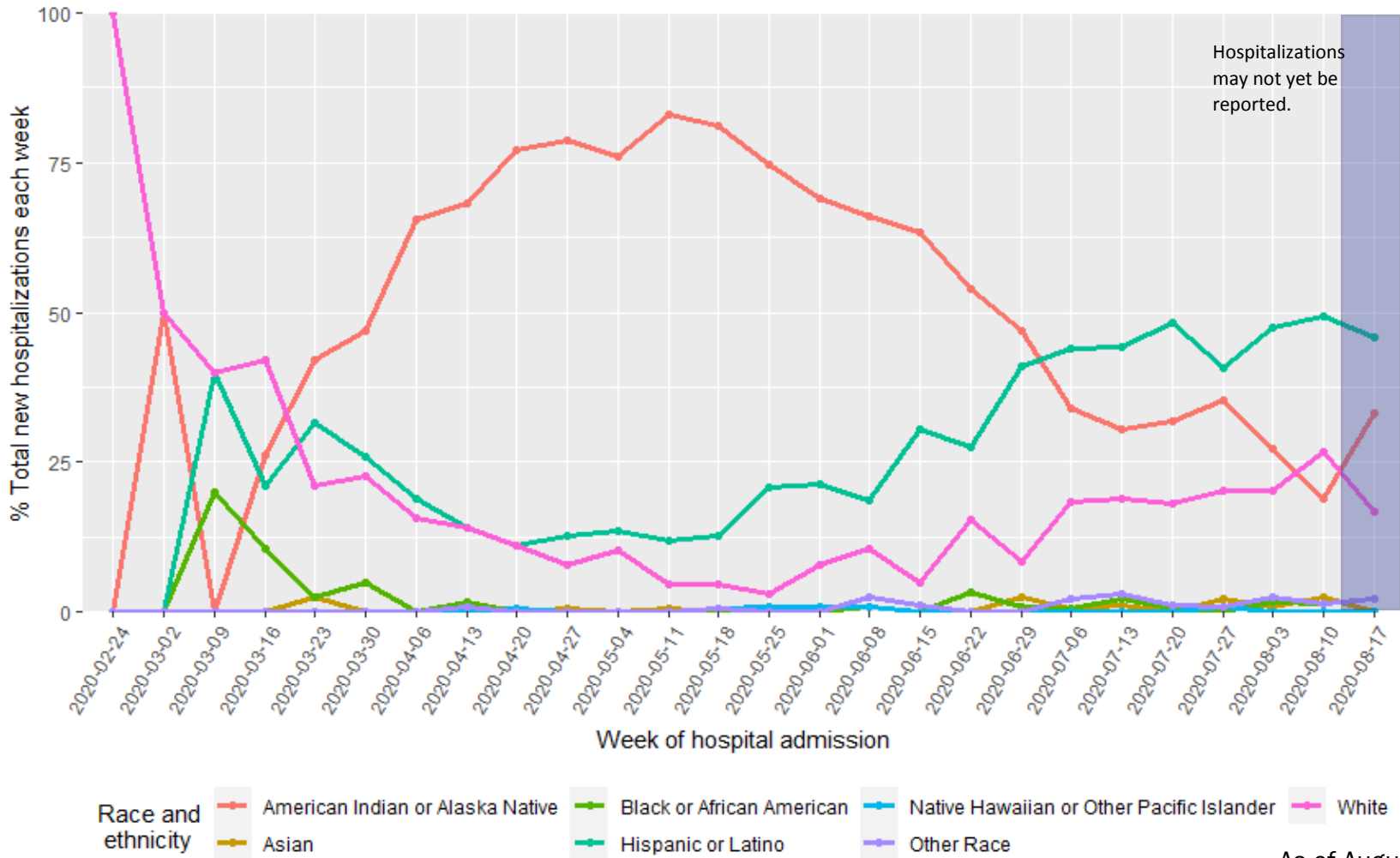
As of August 24, 2020



Investing for tomorrow, delivering today.

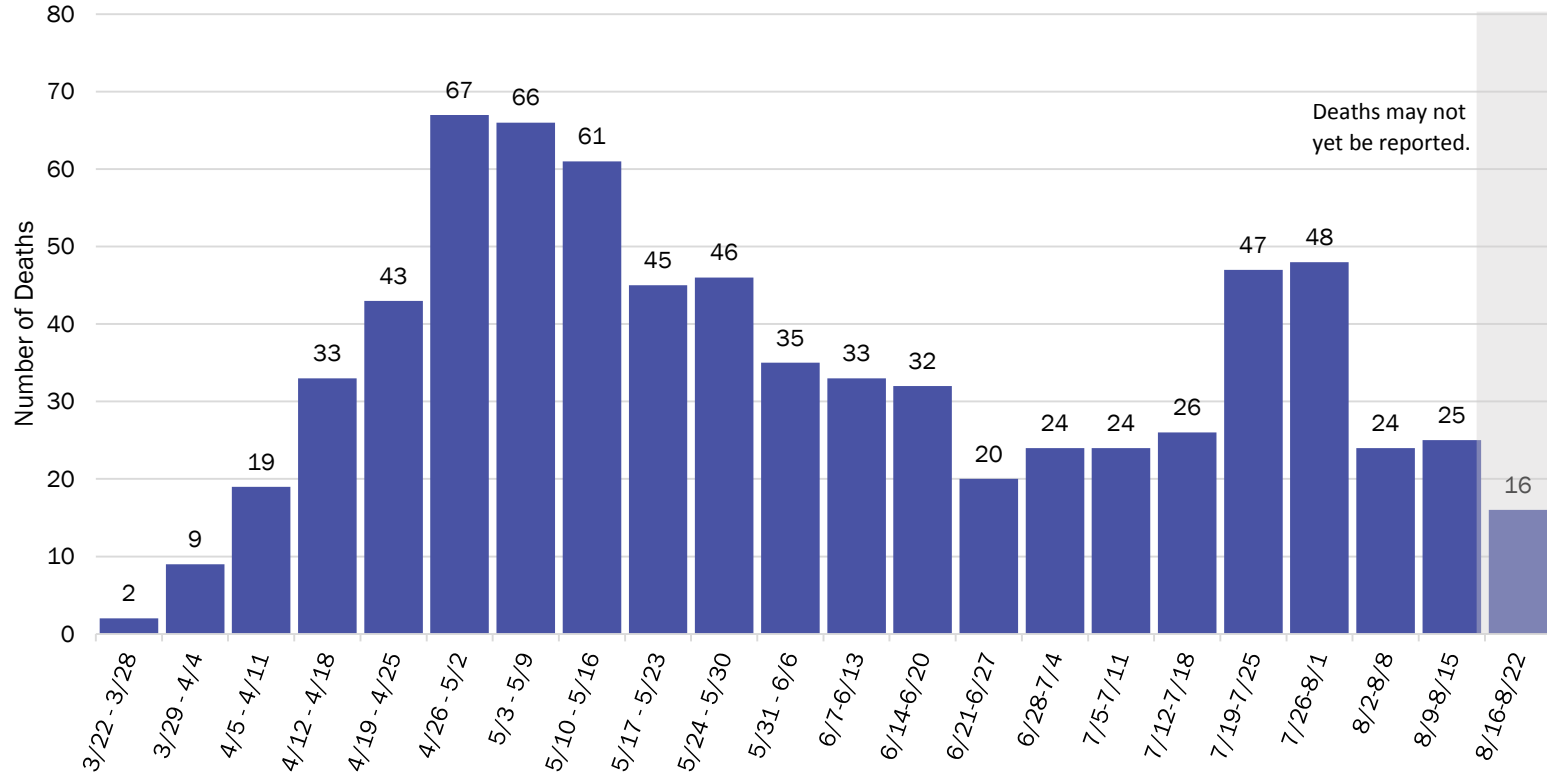
1190 S. St. Francis Drive • Santa Fe, NM 87505 • Phone: 505-827-2613 • Fax: 505-827-2530 • nmhealth.org

New hospitalizations of AI/AN patients may be beginning to increase, whereas admissions of White and Hispanic or Latino patients are declining.



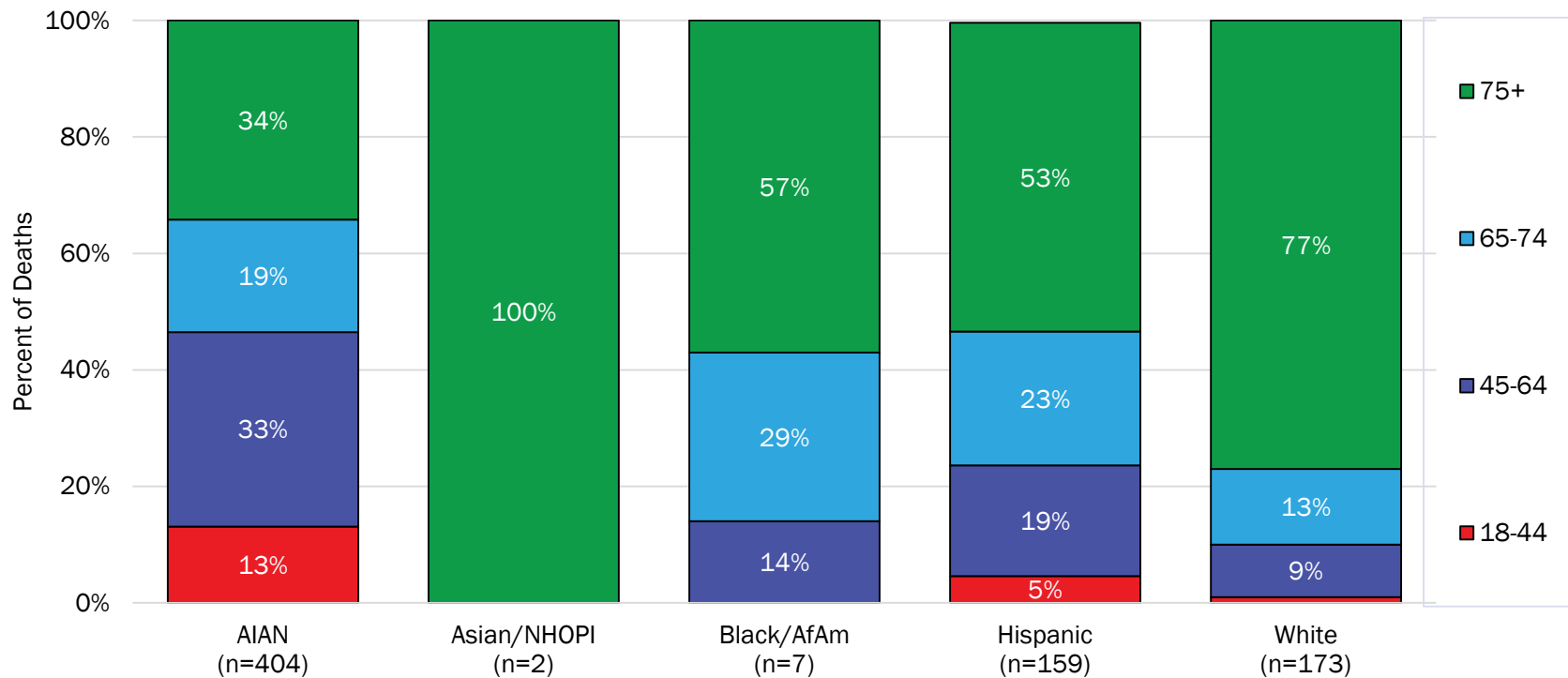
As of August 24, 2020

COVID-19 Deaths by Week of Death, New Mexico



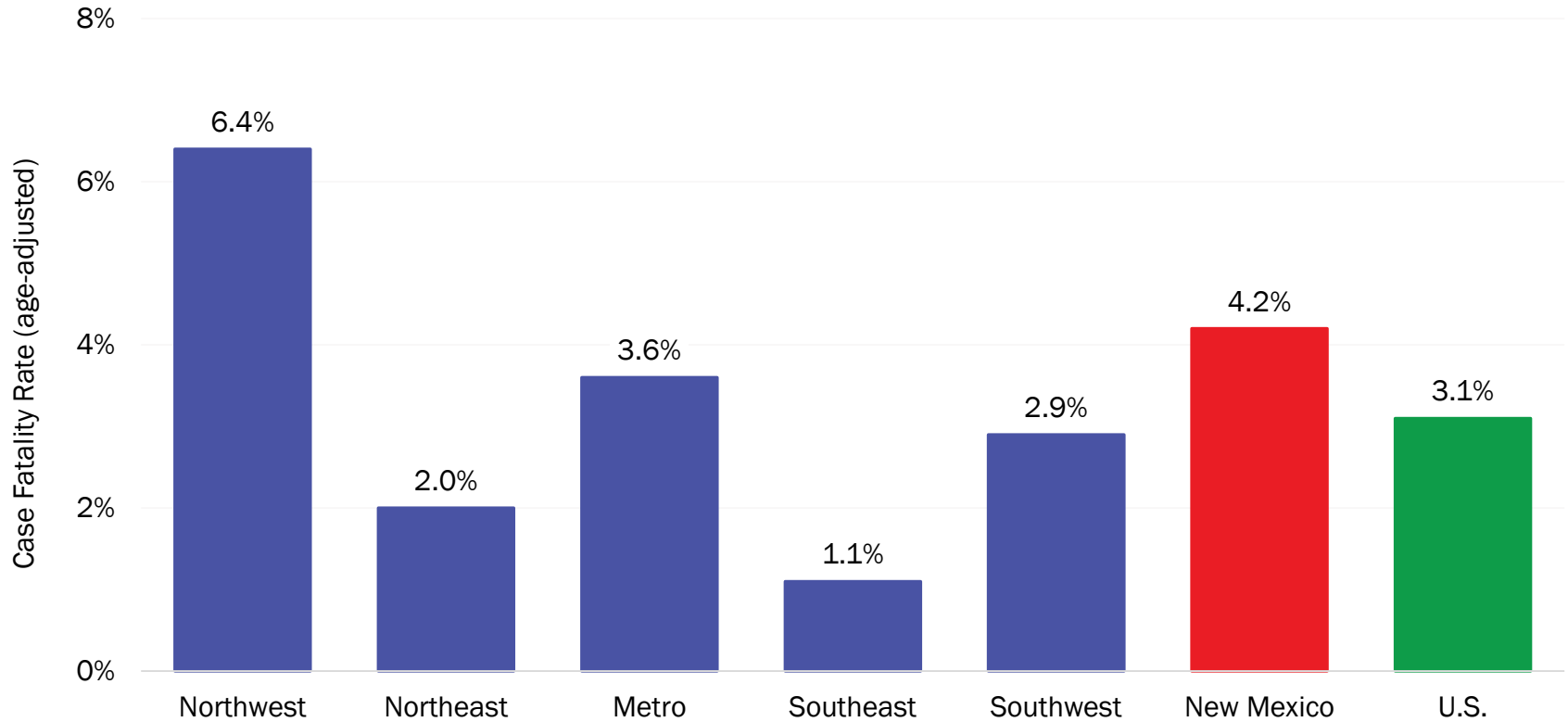
Reporting through 8/23/2020

COVID-19 Deaths by Race/Ethnicity and Age Group, New Mexico



Reporting through 8/23/2020

Minimal changes in case fatality rates across regions



Note: Age-adjusted case fatality rates are adjusted to the current distribution of U.S. COVID-19 cases on 8/2. <https://www.cdc.gov/covid-data-tracker/index.html#demographics>

Source: Bureau of Vital Records and Health Statistics and Infectious Disease Epidemiology Bureau, Epidemiology and Response Division, reporting through 8.23.2020, New Mexico Department of Health.

New Mexico Status Updates

- Case count: Statewide, the increase in daily case counts continues to decline.
- Hospitalizations: After a period of increase in July, hospitalizations are decreasing.
- Deaths: After a two-week spike recently, deaths may be continuing to decrease.
- Social distancing: Cell phone data suggests the mobility of New Mexico residents has been stable, but this varies by region.
- Contact tracing: The median time to quarantine for contacts identified last week was 2 days.

Supplementary Slides

Modeling Assumptions

Variable	Measured Value	Value as of 8.24.2020
R_Effective	Actual Measured Daily Value by key county	R_eff=1.0
Positive Test Multiplier	Calculated by LANL	3.5
Hospitalization and Mortality	Actual rolling value / estimated number of total infected	Medical 0.10% ICU 0.09% Vent Rate 54% of ICU Crude Case Fatality Rate 3.5%
Length of Stay	Actual rolling value / estimated number of total infected	Medical 5 days ICU 14 days ICU on Vent 14 days