

Roswell

Southeast New Mexico's Aviation Hub

While Roswell is known internationally for the 1947 UFO Incident, Roswell is also a vibrant community of 48,163 and numbering over 66,000 in greater Chaves County. Our community sits directly alongside the Pecos Valley and serves as the economic and cultural hub of Southeastern New Mexico.

Roswell has a proud and enduring heritage in aerospace and aviation. Robert Goddard—considered the father of modern rocket propulsion—conducted experimentation with liquid fueled rockets in Roswell in the 1930-40s. The Roswell Air Center (RAC) is the site of the former Walker Air Force Base. Being an original base of Strategic Air Command (SAC), the existing infrastructure is conducive to maintenance, 24/7 operations, and aircraft storage.

Today, RAC is home to 3 MROs, major airlines, and several manufacturing activities.

Roswell has ideal flying conditions. Its high altitude and 310 days of sunshine per year offer extremely low weather volatility and largely uncongested airspace. This ensures minimal delays, low fuel demand, and minimal damage from corrosion. RAC is regular tenant for military flight training, equipment testing, and research/development.

The Roswell Air Center is a commercial airport—with daily flights to Dallas-Fort Worth and Phoenix.

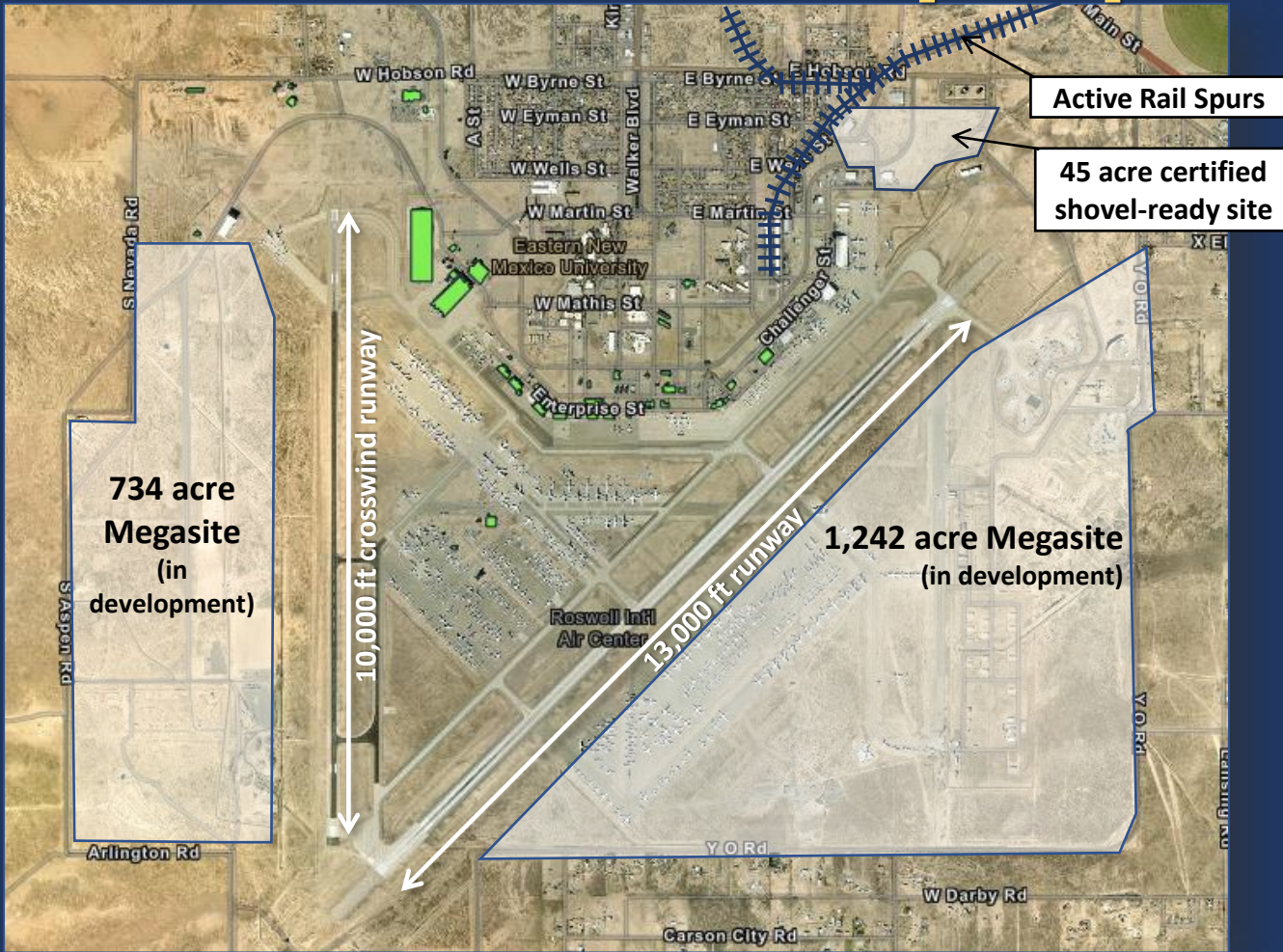
Find out what opportunities Roswell might have for you!



Roswell-Chaves County Economic
Development Corporation
(575) 622-1975
info@chavescounty.net



The Roswell Air Center [ROW]



- ❖ 5000 acre complex in a designated Opportunity Zone
- ❖ Storage for 800 aircraft
- ❖ Daily direct flights to Dallas and Phoenix
- ❖ Low weather volatility — 310 days of sunshine per year

Scan to learn more at www.chavescounty.net



Roswell-Chaves County Economic Development Corporation
 (575) 622-1975
info@chavescounty.net



Michael Espiritu
 President / CEO
mike@chavescounty.net
 (575) 430-0471

